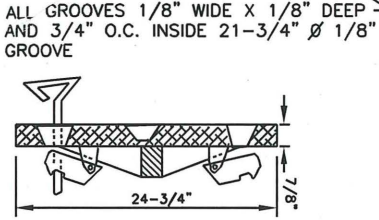
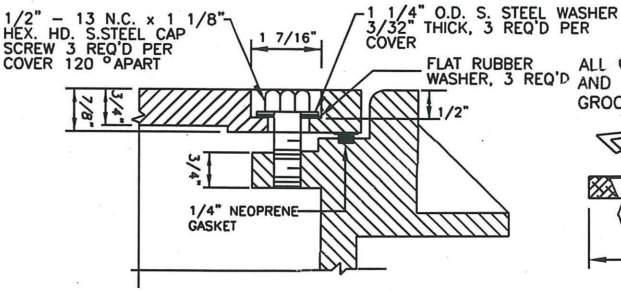
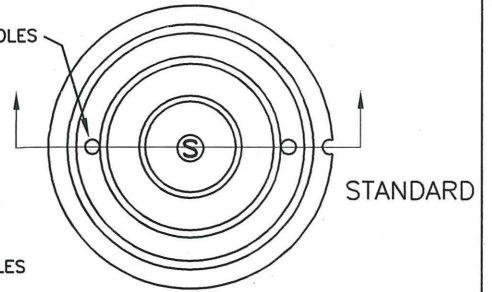
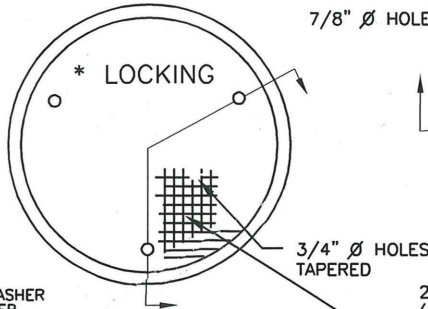
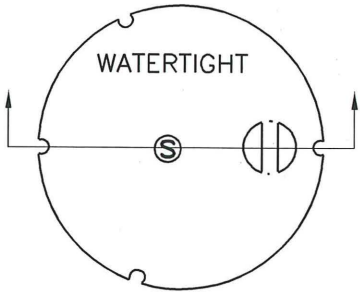
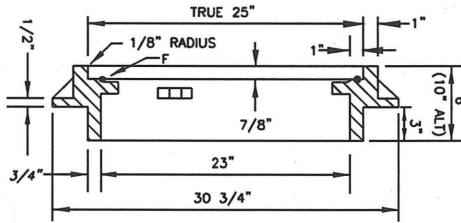
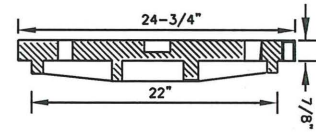


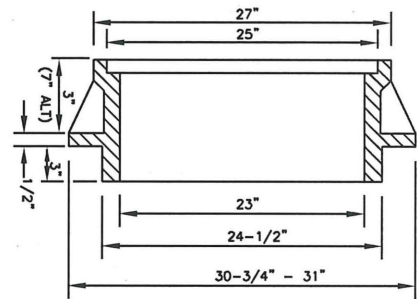
N:\CAD Data\Standard Dwg\Sanitary Sewer Details\SS-2.3_MH Frames&Covers.dwg 3/28/2007 2:01:07 PM



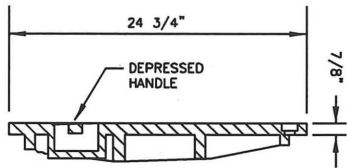
2 HOLE COVER, SANITARY SEWER
(16 HOLE STORM SEWER ONLY)
MANUFACTURED BY: OLYMPIC
FOUNDRY, SEATTLE OR INLAND
FOUNDRY, SPOKANE



WATERTIGHT FRAME



STANDARD & LOCKING FRAME



NOTES:

1. COVER & FRAME TO BE MACHINED TO A TRUE BEARING ALL AROUND.
 2. MATERIAL SHALL BE OF GREY CAST IRON. A.S.T.M. A-48, CLASS 30.
- * LOCKING FRAME AND COVER SHALL BE USED ON ALL SANITARY MANHOLES LOCATED IN EASEMENTS OUTSIDE OF PAVED AREAS.

STANDARD MANHOLE FRAMES & COVERS

PLAN #



CITY OF BATTLE GROUND
APPROVED

[Signature]
CITY ENGINEER

DATE

REVISIONS:	DATE:	DRAWN:	DESIGNED:
1	8/12/98	BSG	GGH
2	8/30/05	ALL	MCH
3	3/28/07	JMH	MCH

SS-2.3