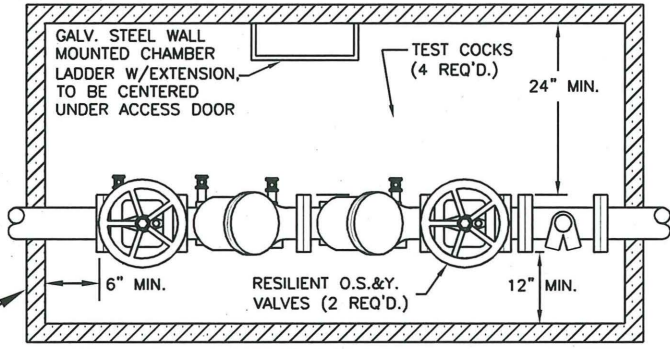


N:\CAD Data\Standard Dwgs\Water Details\WA-5.1_DCVA 2.5 larger.dwg, 4/10/2007 9:00:09 AM

UTILITY VAULT SIZING CHART
(OR APPROVED EQUAL)

PIPE DEPTH UP TO	DCVA SIZE	FDC TEE INSIDE VAULT	FDC TEE OUTSIDE VAULT
4'	4"	675-WA W/2-332P	575-WA W/2
6'	4"	676-WA	577-WA
4'	6"	687-WA	675-WA W/2
6'	6"	676-WA	676-WA
6'	8"	5106-WA	687-WA
6'	10"	5106-WA	5106-WA

PRE-CAST CONC. VAULT H-20 LOADING LID W/LADDER



TOP VIEW

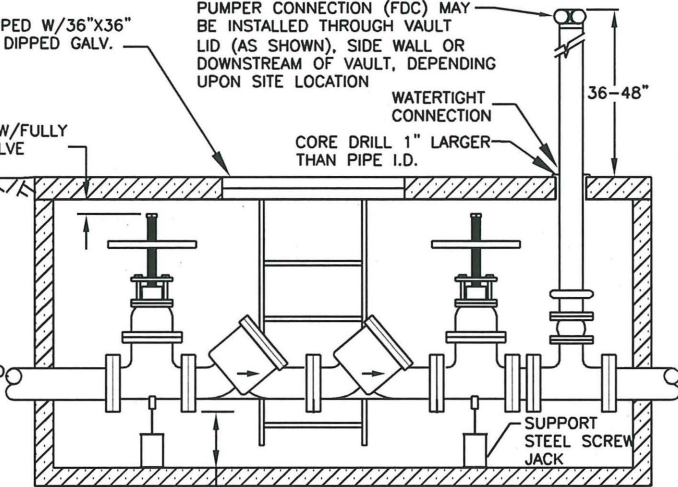
VAULT SHALL BE EQUIPPED W/36"x36" SPRING ASSISTED, HOT DIPPED GALV. DIAMOND PLATE DOOR. UTILITY VAULT #332P

PUMPER CONNECTION (FDC) MAY BE INSTALLED THROUGH VAULT LID (AS SHOWN), SIDE WALL OR DOWNSTREAM OF VAULT, DEPENDING UPON SITE LOCATION

3" MIN. W/FULLY OPEN VALVE

CORE DRILL 1" LARGER THAN PIPE I.D.

A CITY APPROVED ISOLATION VALVE IS REQ'D BETWEEN THE SUPPLY MAIN AND THE VAULT



SIDE VIEW

NOTES:

- DCVA MUST BE ON DEPT. OF HEALTH APPROVED LIST.
- THE DCVA MAY BE INSTALLED ABOVE OR BELOW GROUND PROVIDED ALL CLEARANCES ARE MET.
- APPROVED DCVA TO LAY HORIZONTAL WITH THE GROUND. (VERTICAL IF APPROVED BY DEPT. OF HEALTH)
- THE WATER LINE SHALL BE DISINFECTED, FLUSHED AND PRESSURE TESTED PRIOR TO INSTALLING THE BACKFLOW ASSEMBLY. THE DCVA SHALL BE PROTECTED FROM FREEZING AND FLOODING.
- ALL PIPE, VALVE AND FITTING JOINTS, FROM SUPPLY MAIN, SHALL BE FLANGED OR RESTRAINED.
- GROUT PIPE ENTRANCE AND EXIT, IN VAULT, WITH WATERTIGHT GROUT.
- ALL VAULTS SHALL BE PRE-APPROVED BY THE FIRE MARSHALL PRIOR TO INSTALLATION.
- DCVA SHALL BE INSTALLED AT THE PROPERTY LINE OR EASEMENT LINE, THE BUILDINGS FALL HEIGHT AWAY FROM THE BUILDING AND ON OWNER'S PROPERTY.
- DCVA SHALL HAVE A MINIMUM OF 3' CLEARANCE FROM ALL STRUCTURES.
- DCVA SHALL BE TESTED AFTER INSTALLATION AND PRIOR TO ACCEPTANCE AND ALSO YEARLY THEREAFTER BY A WASHINGTON STATE CERTIFIED BACKFLOW ASSEMBLY TESTER. TEST RESULTS SHALL BE SENT TO THE CITY OF BATTLE GROUND OPERATIONS CENTER.
- PROVIDE 2" DRAIN TO DAY LIGHT OR SUMP PUMP TO STORM POND.
- INSTALL BALL DRIP VALVE (NFPA 13).
- CITY OF BATTLE GROUND PLUMBING PERMIT IS REQUIRED FOR INSTALLATION FOR DCVA.
- DCVA MUST BE APPROVED BY THE CITY OF BATTLE GROUND OPERATIONS CENTER © 360-342-5350.

STANDARD DOUBLE CHECK VALVE ASSEMBLY
2 1/2" & LARGER

PLAN #



CITY OF BATTLE GROUND APPROVED

CITY ENGINEER

DATE

REVISIONS:	DATE:	DRAWN:	DESIGNED:
1	8/12/98	BSG	GGH
2	4/16/07	JMH	MCH

WA-5.1

RLW

4/16/07